

# Automatic Capacitor Former



Maintenance Solutions



# BONITRON

M3628ACF Series

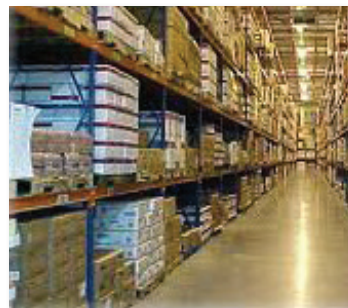
As electrolytic capacitors' age approach end-of-life, their capacitance drops significantly below their original specification. These capacitors typically need replacement to avoid process failure. Measuring the actual capacitance helps determine when these capacitors reach EOL (end of life), avoiding both process failure and expensive, unnecessary preemptive replacement.

The Bonitron M3628ACF allows the user to charge a capacitor bank to a specified voltage, and then discharge the bank. The display will then show the calculated capacitance of the bank. The unit also performs automated capacitor forming profiles, allowing capacitors to be brought out of long-term storage and into service.

## Product Highlights

- Charges, discharges, measures, and forms capacitors
- Variable output voltage: 0 - 1000 VDC
- Digital LCD Display
- Portable - case on wheels
- Operates from standard 120 VAC supply

## Industry Applications



Assembly Lines | Centrifuges | Conveyors | Cranes | Dynamometers | Elevators | Hoists | Pick and Place | & More!



[www.bonitron.com](http://www.bonitron.com)



615-244-2825

[info@bonitron.com](mailto:info@bonitron.com)



## Model Number Selection

	Model Number	Input Voltage	Output Voltage	Output Current	Max. Capacitance
	M3628ACF-Y01-120	120VAC	1000 VDC	0-1 ADC	300,000 uF
	M3628ACF-Y01-240	240VAC	1000 VDC	0-1 ADC	300,000 uF

## Advantages

- Accurate capacitor measurement
- Easily reforms capacitors
- Standard output connections
- Overcurrent and overtemperature protection
- Tough impact and weather resistant case

## Benefits

- Measuring aging capacitors helps avoid pre-emptive replacement
- Reforming capacitors can aid in preventing catastrophic failure
- Quick verification of stored drives
- Reforming saves cost of purging old stock capacitors
- Decreases maintenance time and cost

## Dimensions



## Specifications

<b>Maximum Discharging Time</b> .....	20 minutes
<b>Controls</b> .....	Built into LCD display
<b>Displays</b> .....	LCD
<b>Dimensions</b> .....	9.0"H x 22.0"W x 13.9"D
<b>Weight</b> .....	49 lbs.
<b>Storage Temp</b> .....	-20°C to +65°C
<b>Humidity</b> .....	Below 90% non-condensing
<b>Atmosphere</b> .....	Free of corrosive gas and conductive dust
<b>Operating Temp</b> .....	0°C to 40°C